

Music center

time signature

and meter



how to use this center

This center consists of

- ◇ nine Task Cards
- ◇ a student check-off list
- ◇ student worksheets
- ◇ note cards
- ◇ music recordings
- ◇ and an answer key

Students will be able to work on 4/4, 3/4, 2/4, and mixed meters. Each meter card is color coded for easy differentiation.

Some tasks could be done in pairs – which ones are up to you!

preparations

- Cut out and laminate several sets of note cards (slide 6).
- Laminate task cards.

- ❑ Print out student check-off list and worksheets. I like to staple them together so every student gets a neat little pack. You can add slide 5 as a little reminder for the terms used in this center.
- ❑ Indicate pair work.
- ❑ I often print out the answer key and hide it in a special spot. When students are done they can double-check their work before handing it in.
- ❑ Prepare the recording.

You can transfer the playlist to an iPod or make a CD – whatever works for you. If you are lucky enough to have enough devices, you could have four different listening stations, one for each task. Due to copyright I can't include all songs that I use. You can find them easily online or you can use my link.

Also, the rhythm recordings are by no means professional, but enough for my use in class ... Feel free to record your own!

Recording tracks

Tracks not included are underlined.

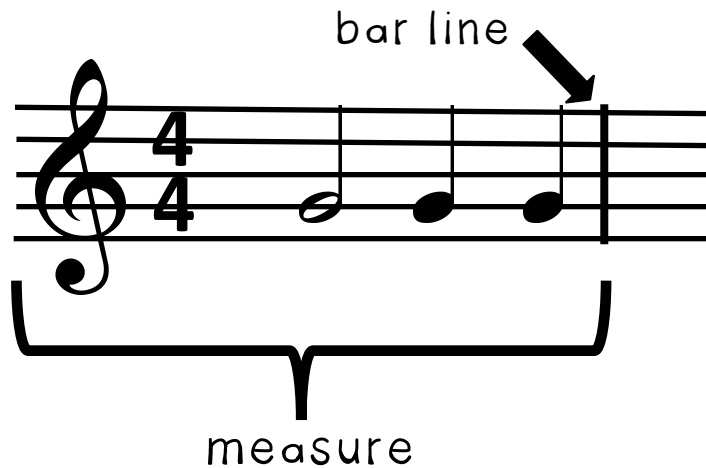
- 1 measure matching 4/4 meter
- 2 measure matching 3/4 meter
- 3 measure matching 2/4 meter
- 4 measure matching mixed meter

5 get moving song in 3/4 meter
6 get moving song in 4/4 meter

- 7 match that song - Are you sleeping
- 8 match that song - Tumbalalaika
- 9 match that song - Blue Bird
- 10 match that song - Que Sera, Sera
- 11 match that song - Had a Little Rooster

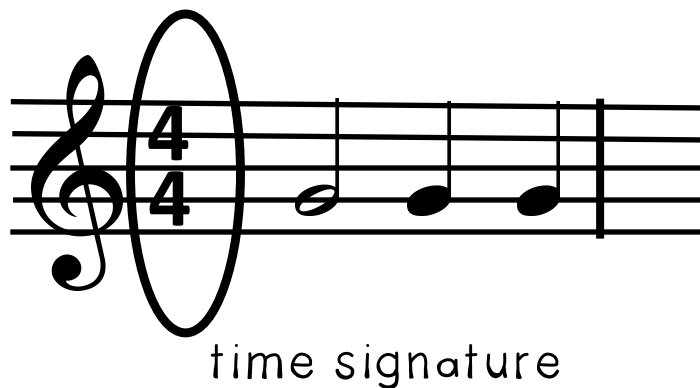
- 12 listen and write 1 steady beat
- 12 listen and write 1
- 13 listen and write 2 steady beat
- 13 listen and write 2
- 14 listen and write 3 steady beat
- 14 listen and write 3

time signature and meter



Every piece of music has bar lines to make it easier to read.

The space between the bar lines is called a measure.



The time signature shows how many beats are in one measure.

In the measure on the left, we have four beats. We say that this piece of music is in 4 meter.



Name: _____

Date: _____

time signature



and meter



how many notes?

bar lines

fill it up!

complete the measure

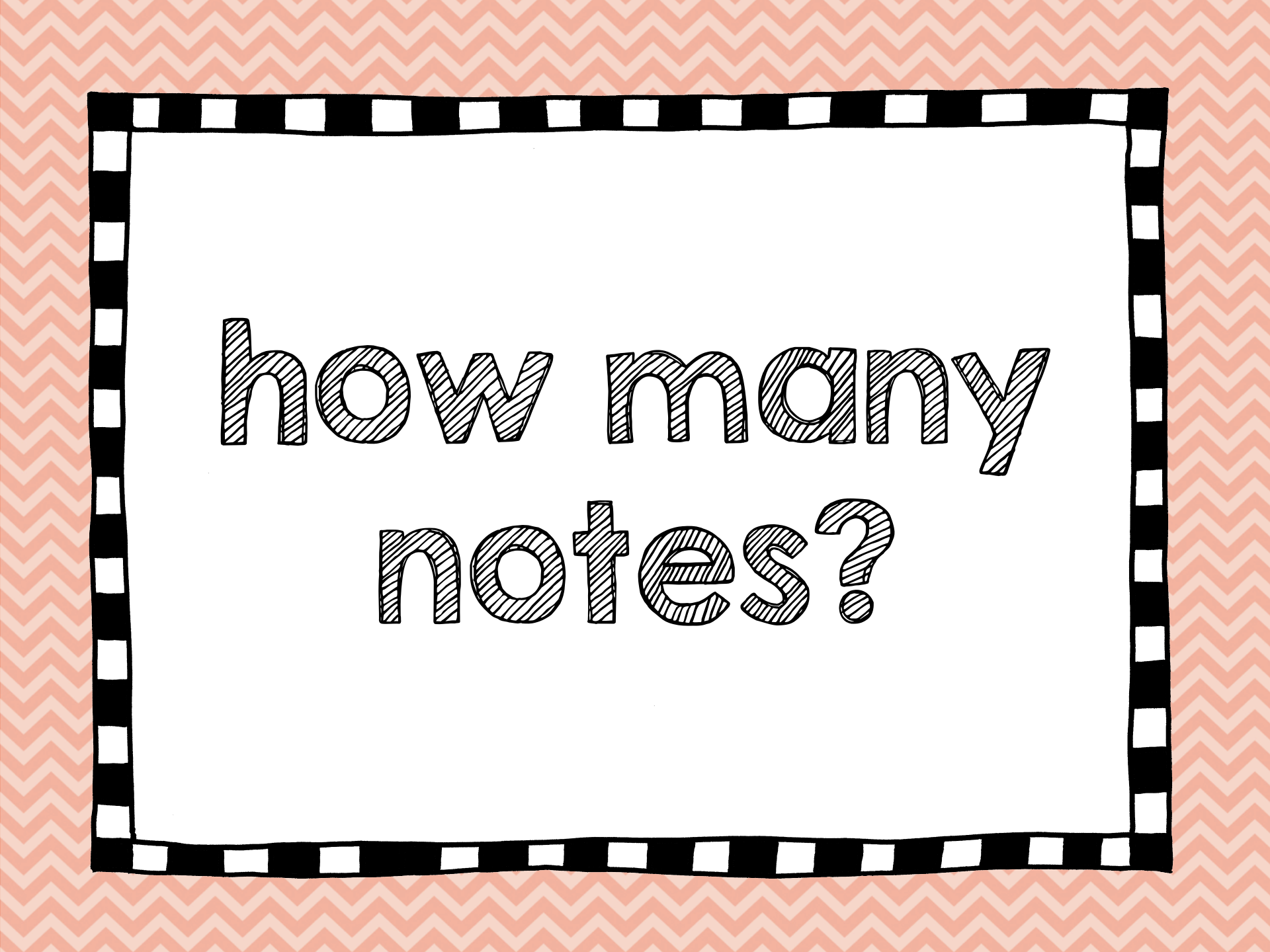
measure matching

get moving!

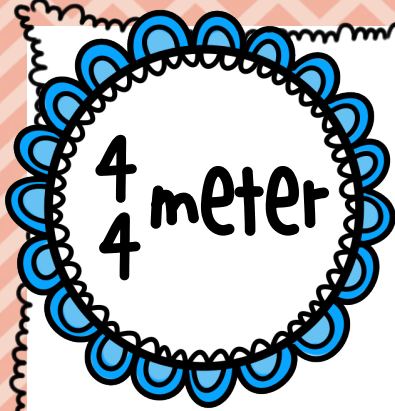
match that song!

compose!

listen and write



how many
notes?



how many notes?

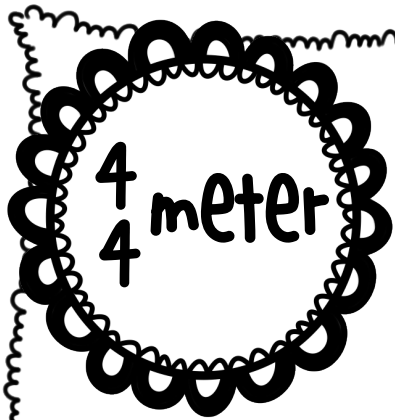
How many notes fit into a $\frac{4}{4}$ meter?

Experiment by filling the measure box below with different note cards.

Fill the box completely.

$\frac{4}{4}$





how many
notes?

How many whole notes fit into a $\frac{4}{4}$ meter?

How many half notes fit into a $\frac{4}{4}$ meter?

How many quarter notes fit into a $\frac{4}{4}$ meter?

How many eighth notes fit into a $\frac{4}{4}$ meter?

how many
notes?

$\frac{3}{4}$ meter

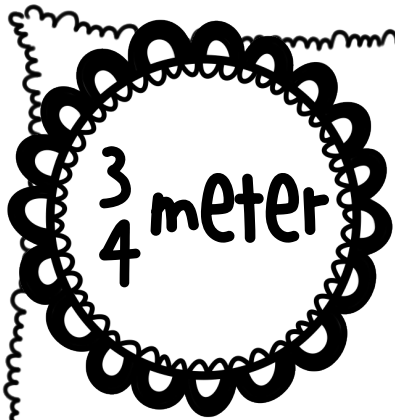
How many notes fit into a $\frac{3}{4}$ meter?

Experiment by filling the measure box
below with different note cards.

Fill the box completely.

$\frac{3}{4}$





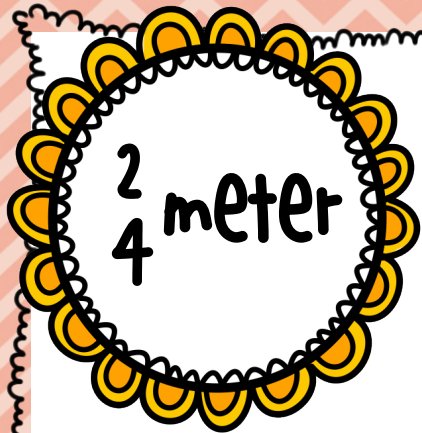
how many
notes?

How many whole notes fit into a $\frac{3}{4}$ meter?

How many half notes fit into a $\frac{3}{4}$ meter?

How many quarter notes fit into a $\frac{3}{4}$ meter?

How many eighth notes fit into a $\frac{3}{4}$ meter?



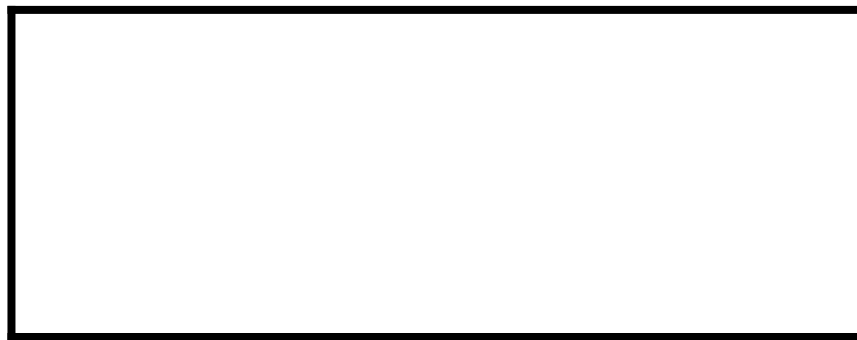
how many
notes?

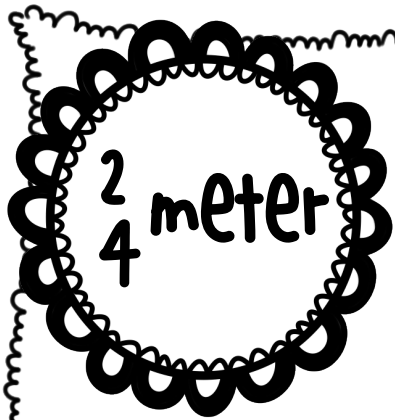
How many notes fit into a $\frac{2}{4}$ meter?

Experiment by filling the measure box
below with different note cards.

Fill the box completely.

$\frac{2}{4}$





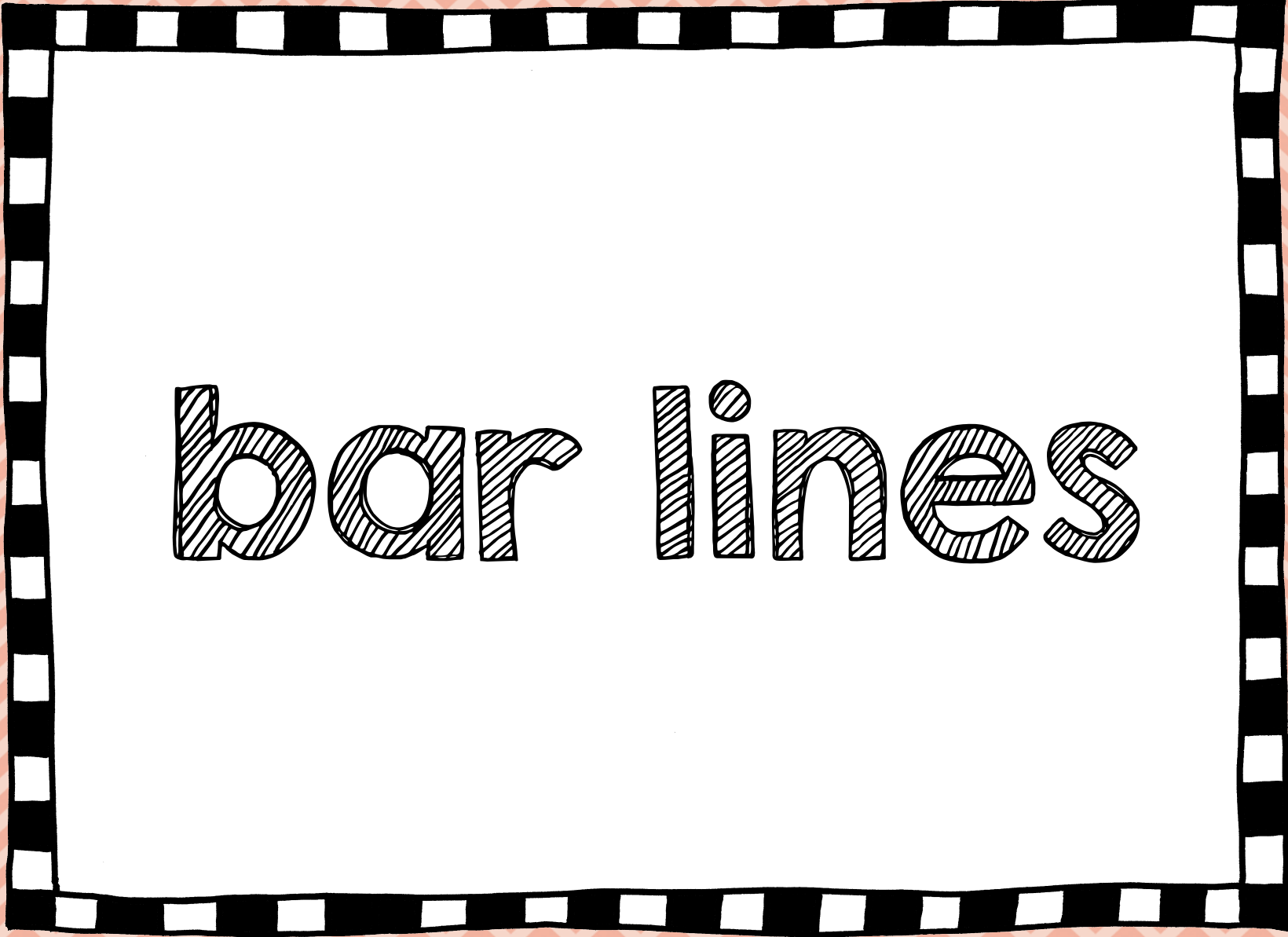

how many
notes?

How many whole notes fit into a $\frac{2}{4}$ meter?

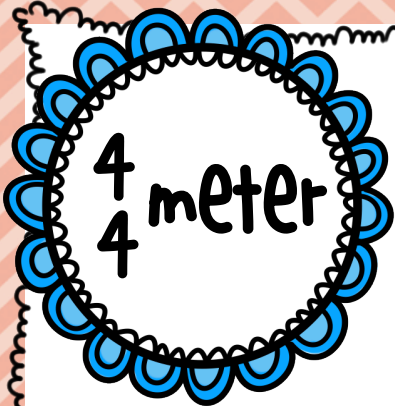
How many half notes fit into a $\frac{2}{4}$ meter?

How many quarter notes fit into a $\frac{2}{4}$ meter?

How many eighth notes fit into a $\frac{2}{4}$ meter?

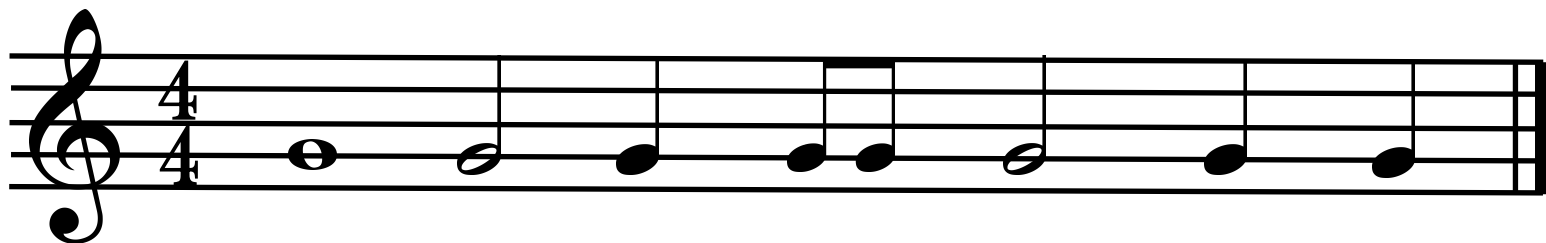
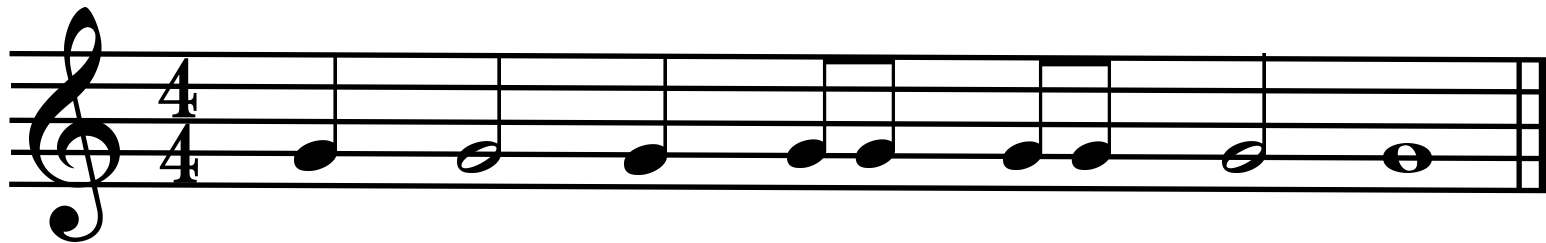
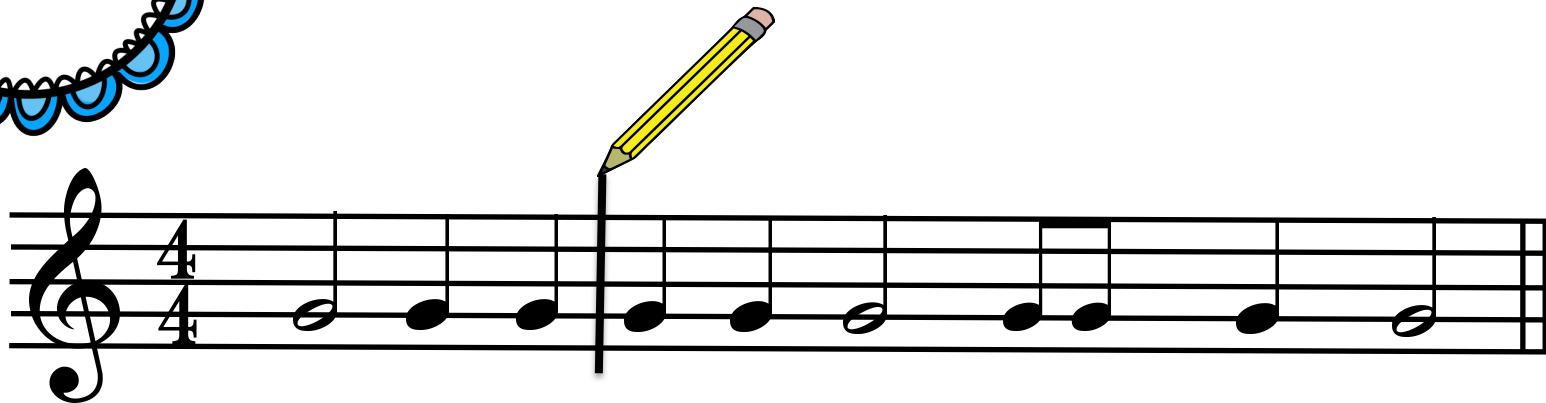


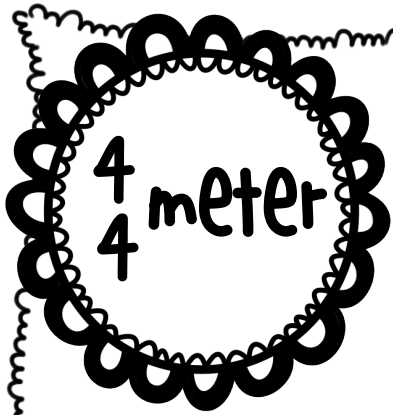
bar lines



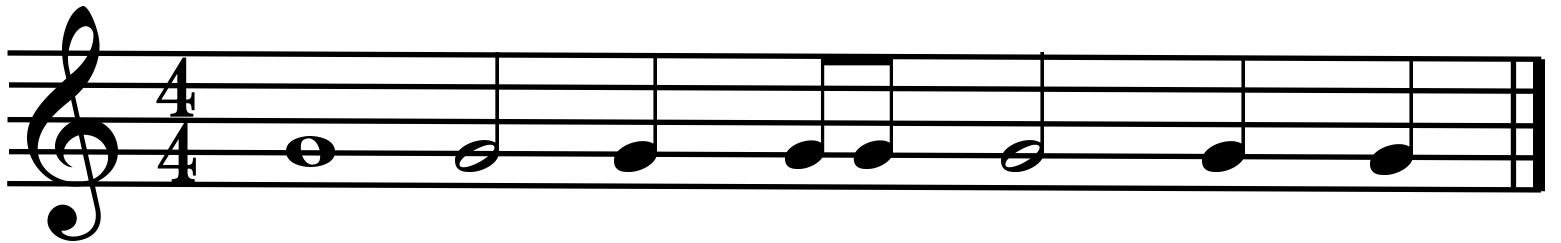
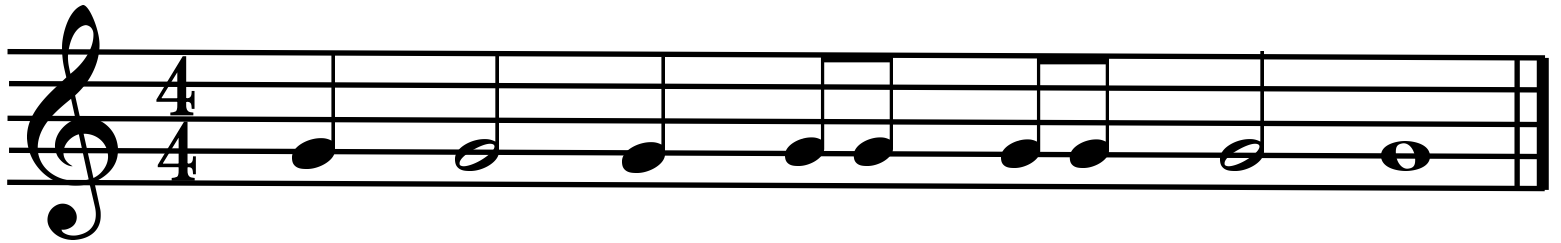
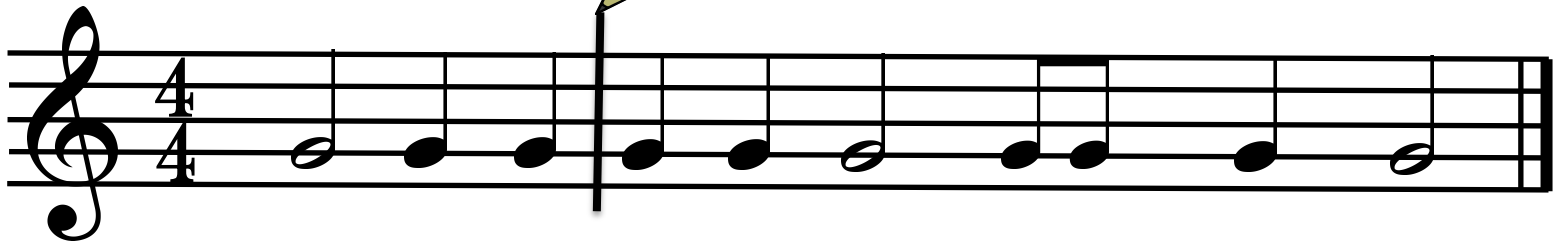
Somebody forgot to put in bar lines! Can you add them?

bar lines





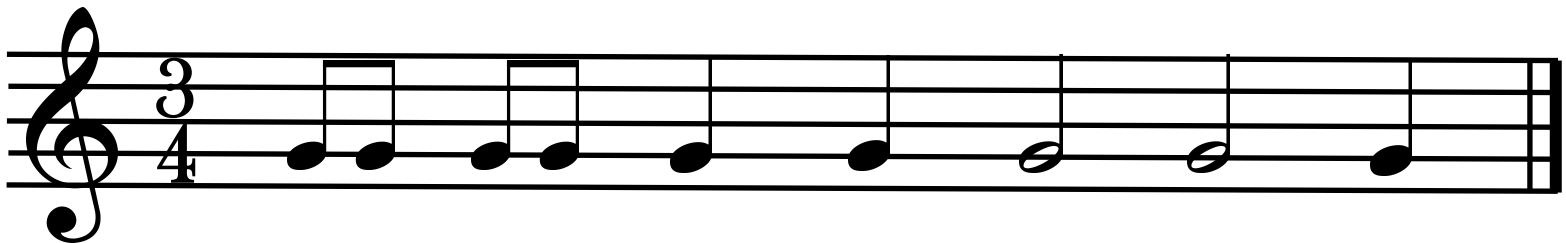
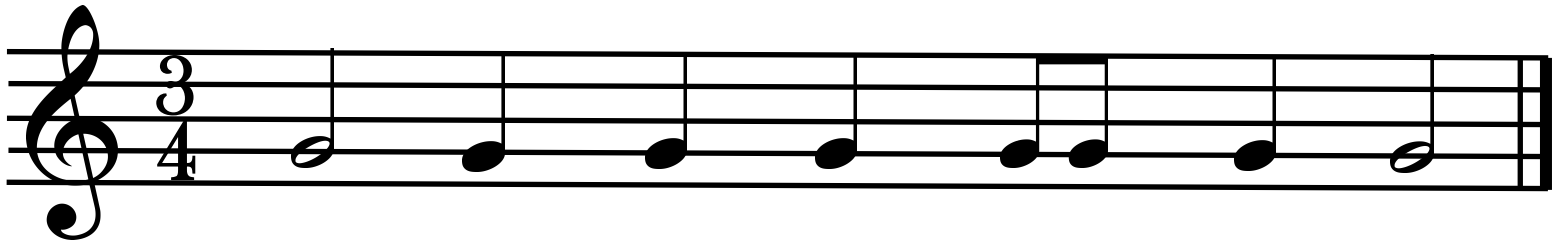
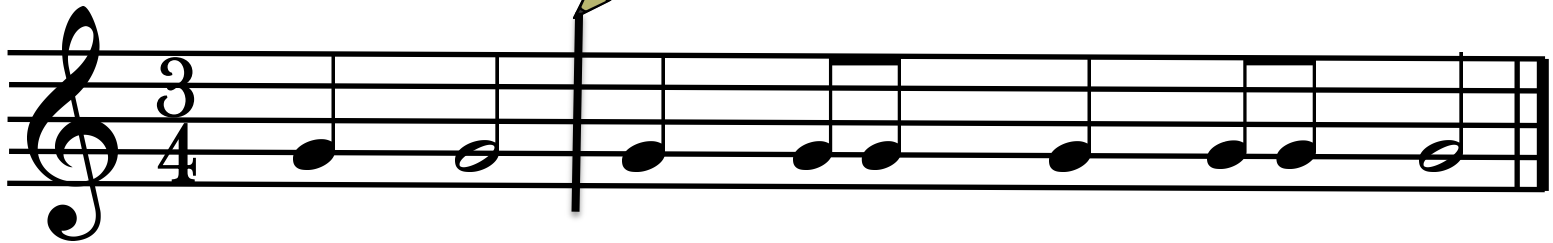
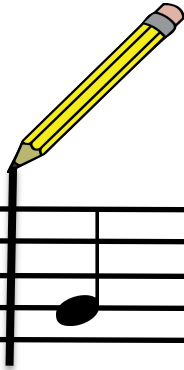
Somebody forgot to put in bar lines! Can you add them?



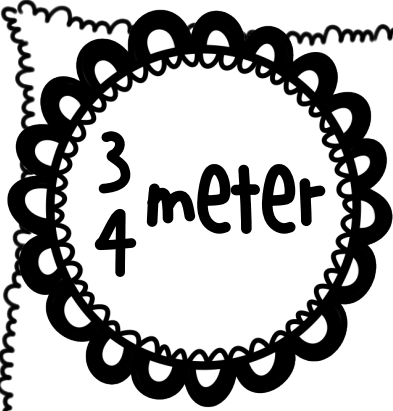
bar lines

$\frac{3}{4}$ meter

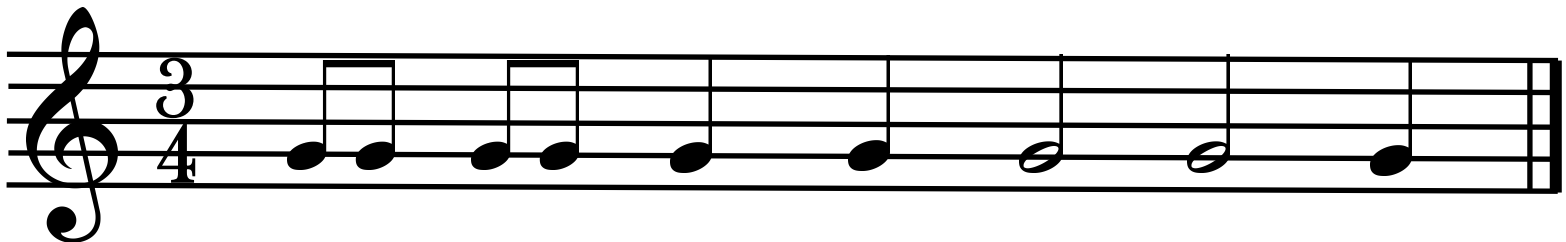
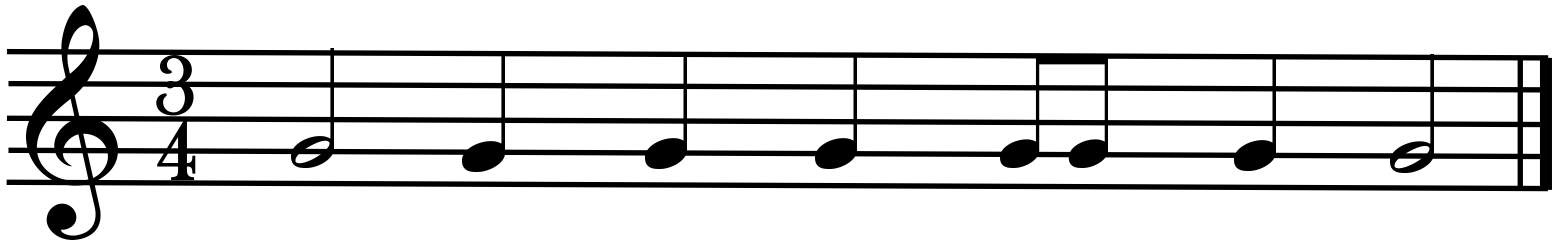
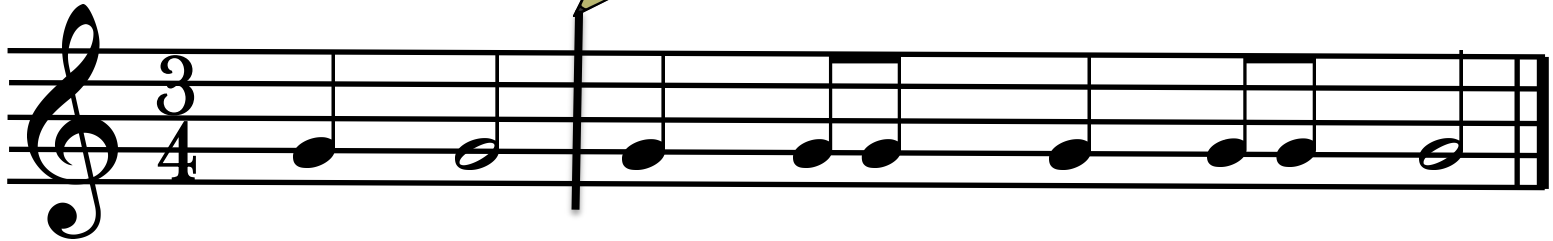
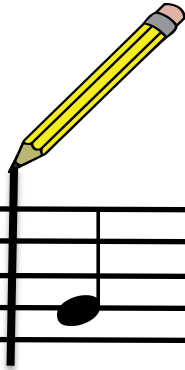
Somebody forgot to put in bar lines! Can you add them?



bar lines



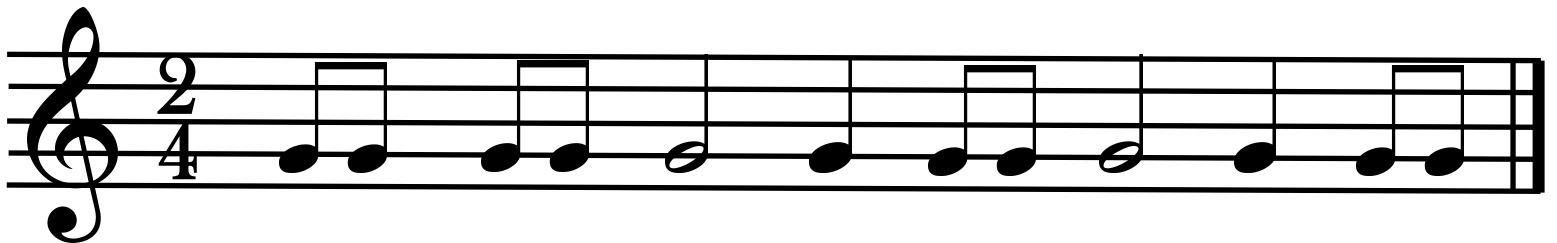
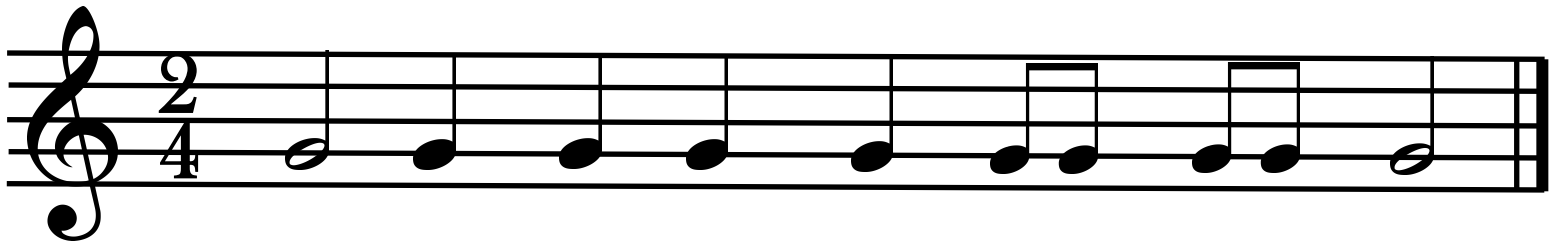
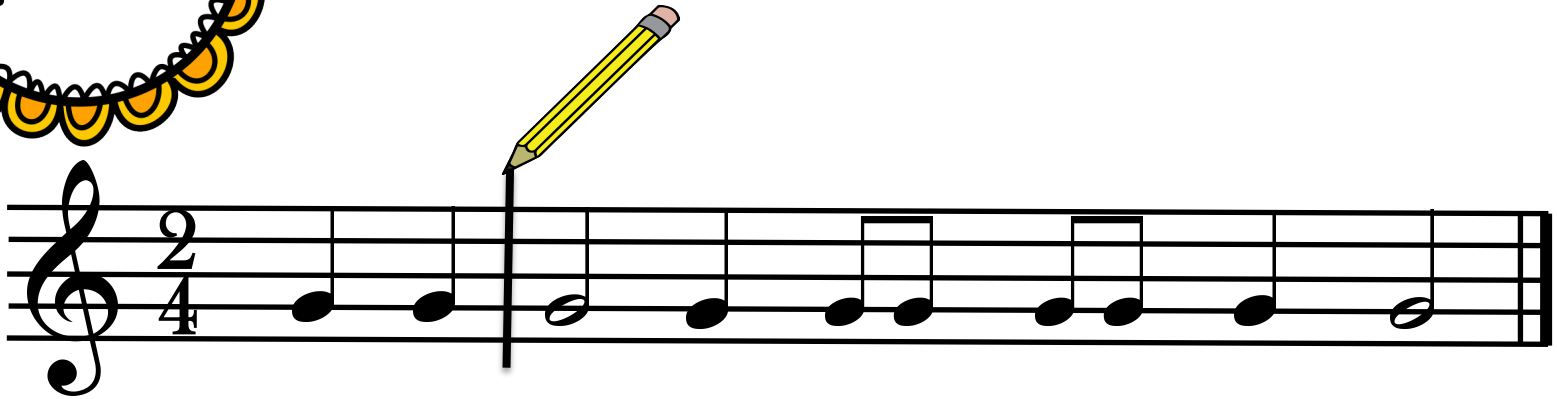
Somebody forgot to put in bar lines! Can you add them?



bar lines

$\frac{2}{4}$ meter

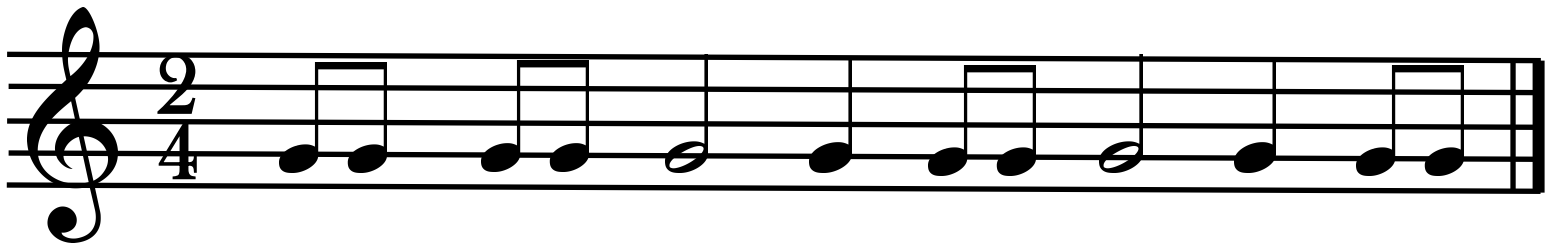
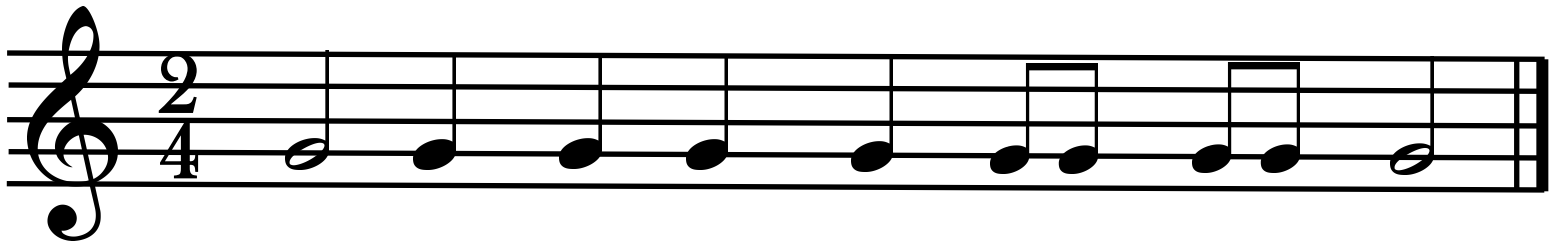
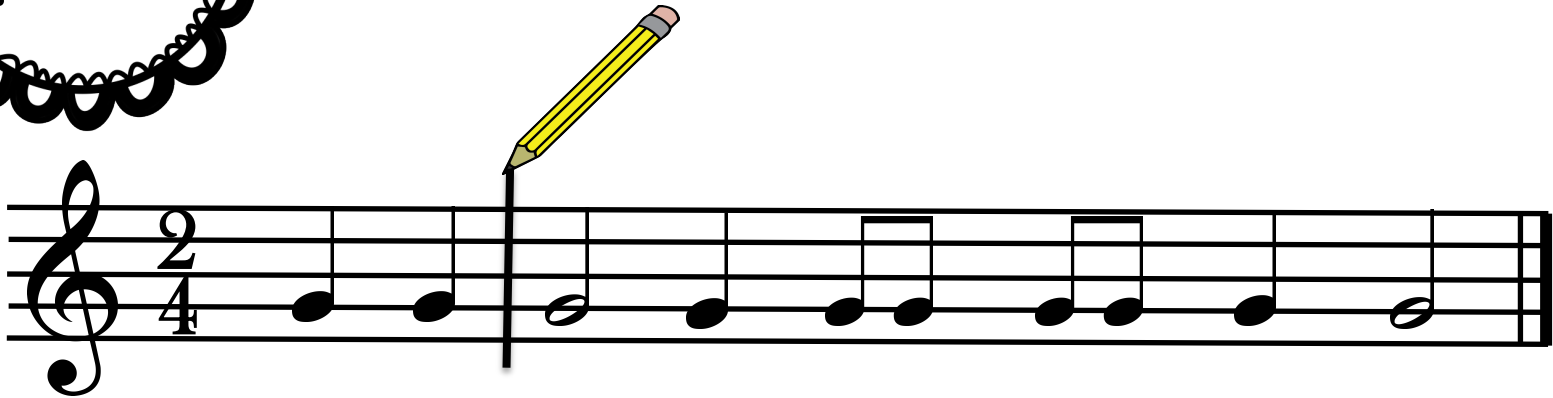
Somebody forgot to put in bar lines! Can you add them?



bar lines

$\frac{2}{4}$ meter

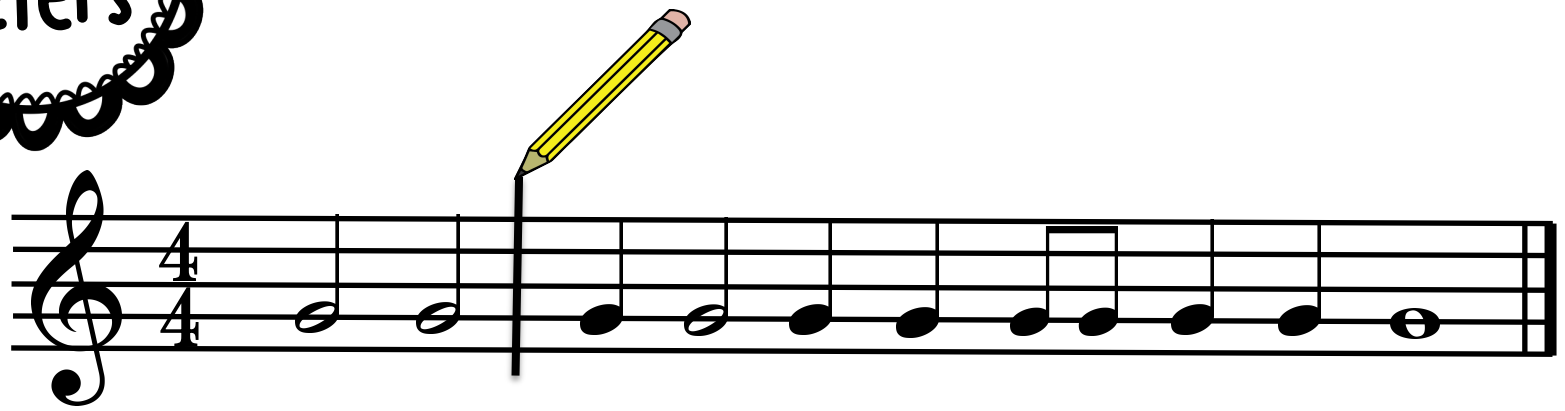
Somebody forgot to put in bar lines! Can you add them?



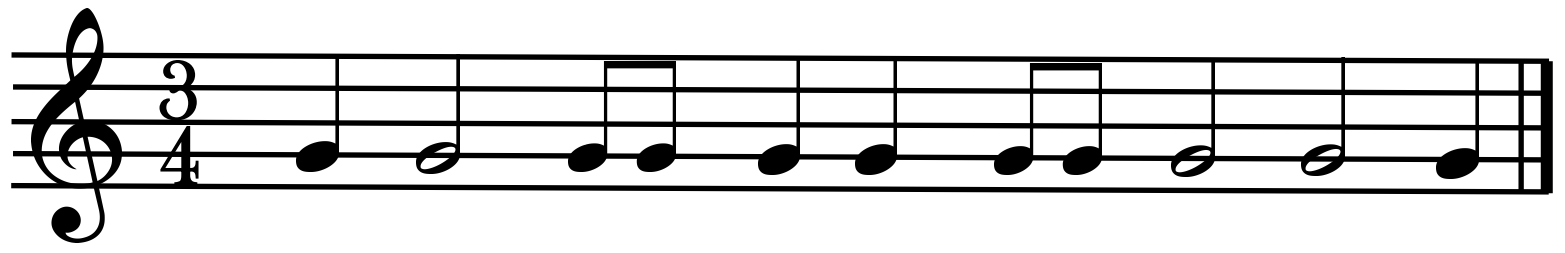
**mixed
meters**

bar lines

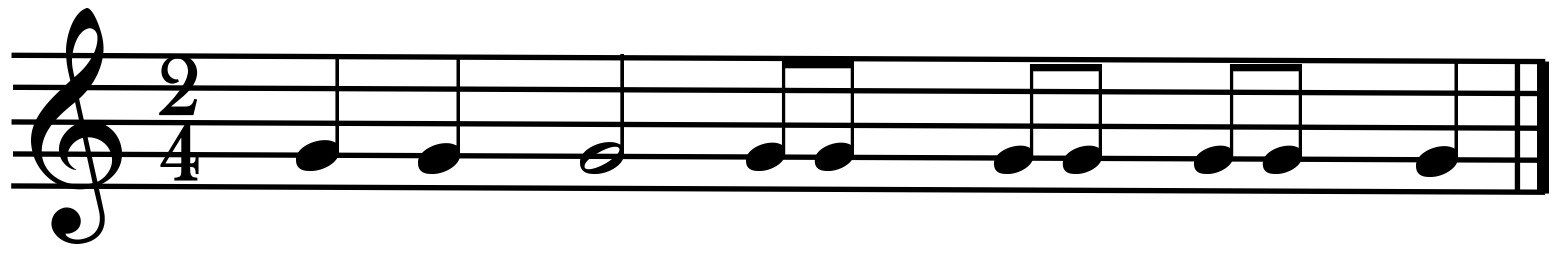
Add the bar lines.



A musical staff in treble clef with a 4/4 time signature. The staff contains a sequence of notes: a quarter note G4, a quarter note A4, a quarter note B4, a quarter note C5, a quarter note B4, a quarter note A4, a quarter note G4, a quarter note F4, a quarter note E4, a quarter note D4, and a half note C4. A vertical bar line is drawn after the first two notes. A yellow pencil is positioned vertically, pointing to the bar line.



A musical staff in treble clef with a 3/4 time signature. The staff contains a sequence of notes: a quarter note G4, a quarter note A4, a quarter note B4, a quarter note C5, a quarter note B4, a quarter note A4, a quarter note G4, a quarter note F4, a quarter note E4, and a quarter note D4.

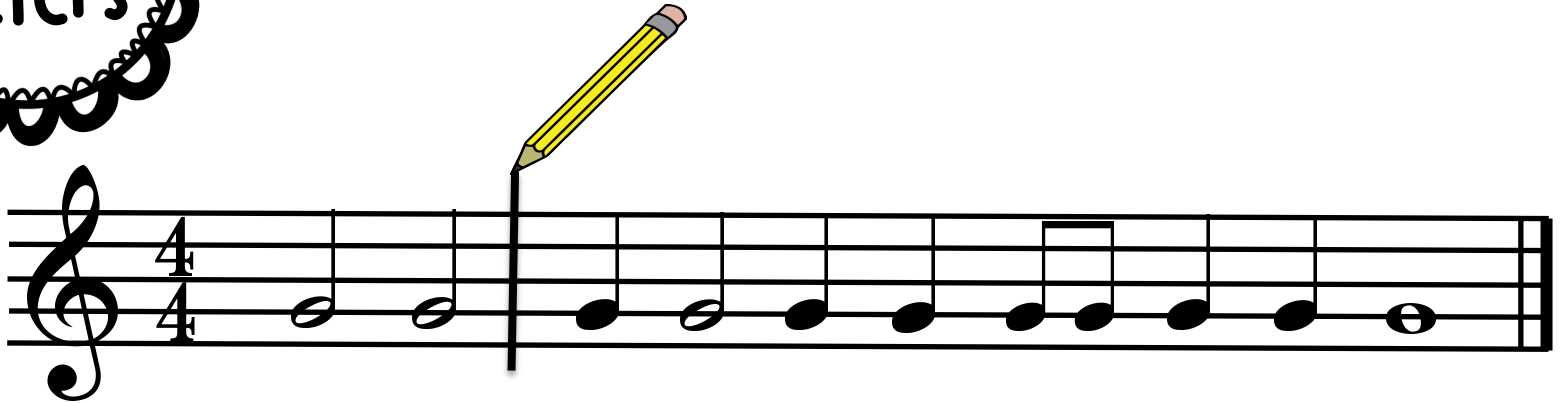


A musical staff in treble clef with a 2/4 time signature. The staff contains a sequence of notes: a quarter note G4, a quarter note A4, a quarter note B4, a quarter note C5, a quarter note B4, a quarter note A4, a quarter note G4, a quarter note F4, a quarter note E4, and a quarter note D4.

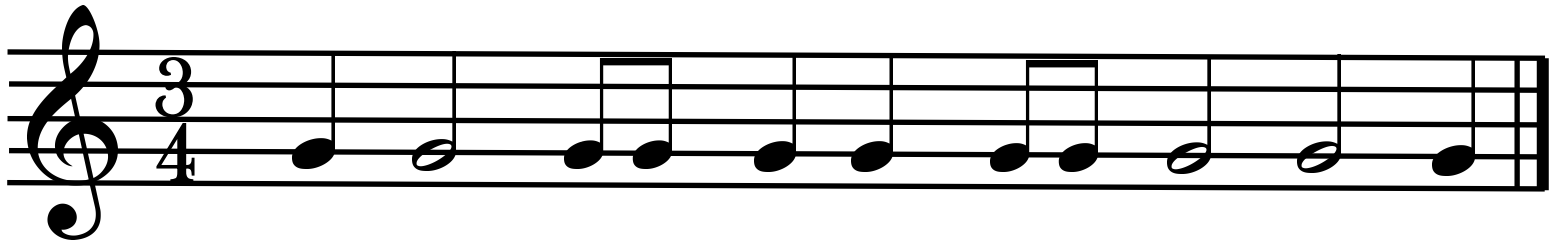
**mixed
meters**

Add the bar lines.

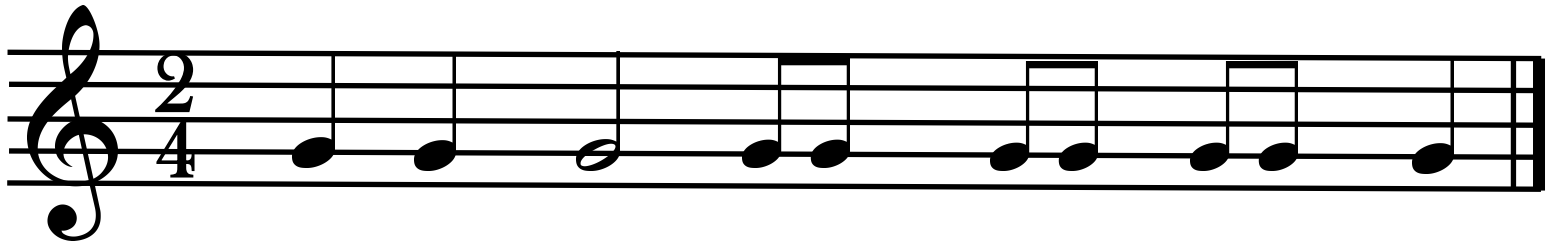
bar lines



A musical staff in treble clef with a 4/4 time signature. The staff contains a sequence of notes: a quarter note G4, a quarter note A4, a quarter note B4, a quarter note C5, a quarter note B4, a quarter note A4, a quarter note G4, a quarter note F4, a quarter note E4, a quarter note D4, and a quarter note C4. A vertical bar line is drawn after the first two notes. A yellow pencil is positioned above the staff, pointing to the bar line.

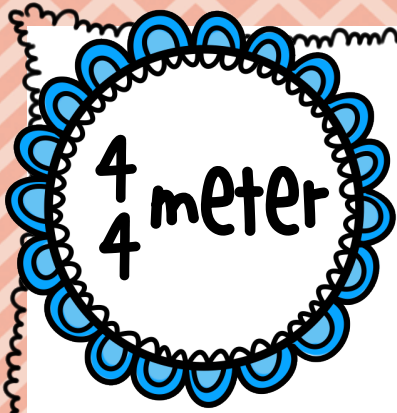


A musical staff in treble clef with a 3/4 time signature. The staff contains a sequence of notes: a quarter note G4, a quarter note A4, a quarter note B4, a quarter note C5, a quarter note B4, a quarter note A4, a quarter note G4, a quarter note F4, a quarter note E4, a quarter note D4, and a quarter note C4.



A musical staff in treble clef with a 2/4 time signature. The staff contains a sequence of notes: a quarter note G4, a quarter note A4, a quarter note B4, a quarter note C5, a quarter note B4, a quarter note A4, a quarter note G4, a quarter note F4, a quarter note E4, a quarter note D4, and a quarter note C4.

fill it up!



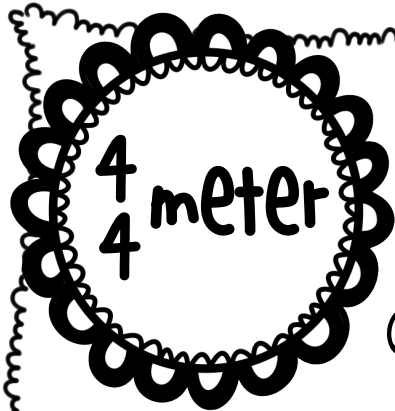
fill it up!

Something is missing! Use the cards to complete the measure.

4 4			
--------	--	--	--



4 4		
--------	--	--


Copy the filled boxes onto your paper.

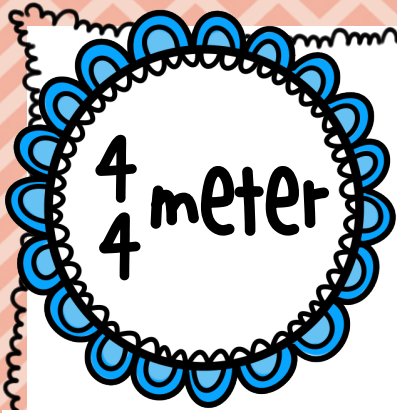


fill it up!

Copy the filled boxes onto your paper.


4 4 		
---	---	--

4 4 	
--	--



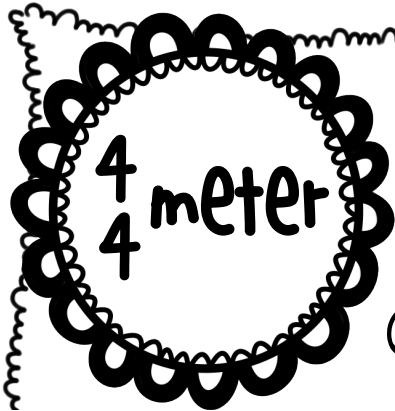
fill it up!

Something is missing! Use the cards to complete the measure.

4 4			
--------	---	---	--



4 4		
--------	--	--


Copy the filled boxes onto your paper.

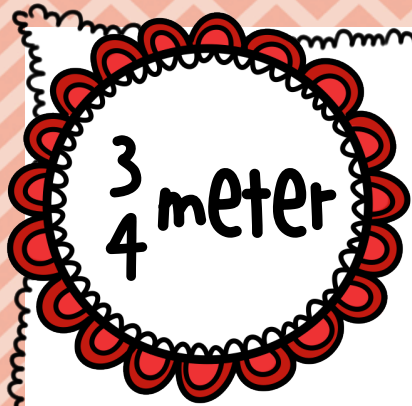


fill it up!

Copy the filled boxes onto your paper.

4 4			
--------	---	---	--


4 4		
--------	--	--



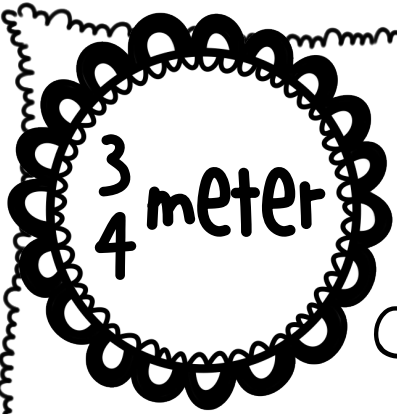
fill it up!

Something is missing! Use the cards to complete the measure.

$\frac{3}{4}$ 	
--	--

$\frac{3}{4}$ 	
---	--


Copy the filled boxes onto your paper.

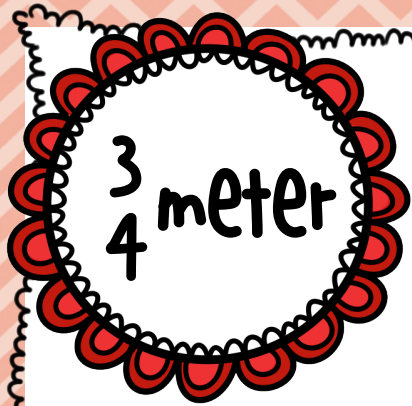


fill it up!

Copy the filled boxes onto your paper.



3 4 	
---	--


3 4 	
--	--



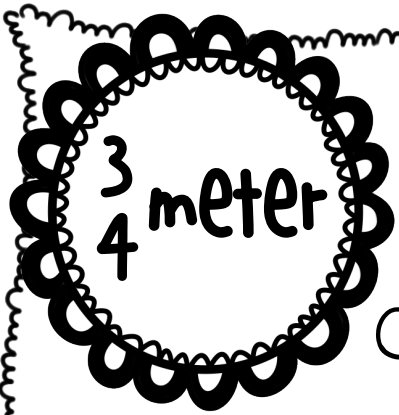
fill it up!

Something is missing! Use the cards to complete the measure.

$\frac{3}{4}$			
---------------	---	---	--



$\frac{3}{4}$		
---------------	--	--


Copy the filled boxes onto your paper.



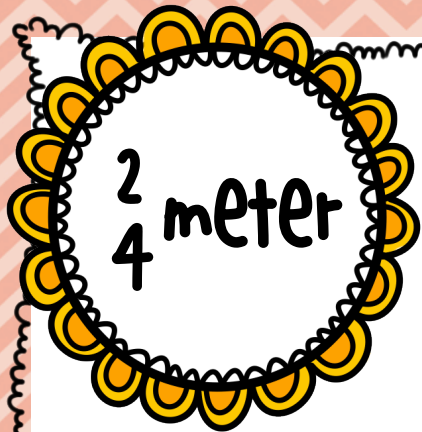
fill it up!

Copy the filled boxes onto your paper.

$\frac{3}{4}$ 		
--	---	--

$\frac{3}{4}$ 	
---	--


Copy the filled boxes onto your paper.




$\frac{2}{4}$ meter

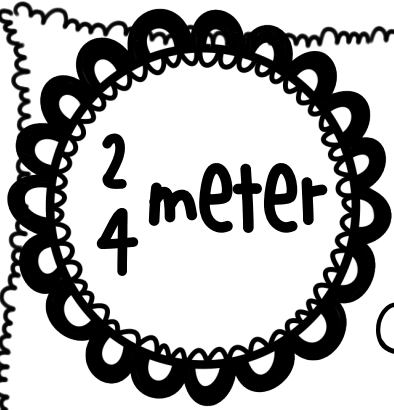
fill it up!

Something is missing! Use the cards to complete the measure.

$\frac{2}{4}$ 	
--	--


$\frac{2}{4}$ 	
---	--


Copy the filled boxes onto your paper.

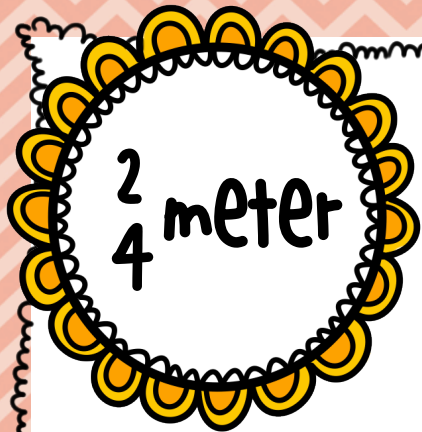


fill it up!

Copy the filled boxes onto your paper.

2 4 	
---	--

2 4 	
--	--





$\frac{2}{4}$ meter

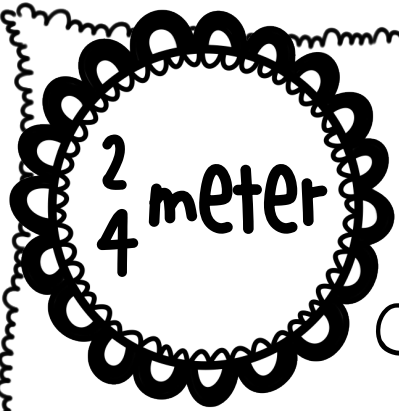
fill it up!

Something is missing! Use the cards to complete the measure.

$\frac{2}{4}$		
---------------	--	--


$\frac{2}{4}$			
---------------	--	--	--

Copy the filled boxes onto your paper.





fill it up!


Copy the filled boxes onto your paper.

	
--	---

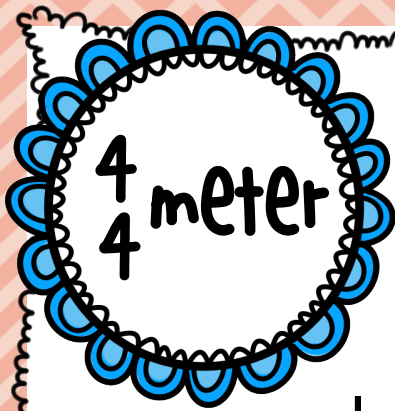
2
4

		
--	--	--

2
4



complete
the
measure



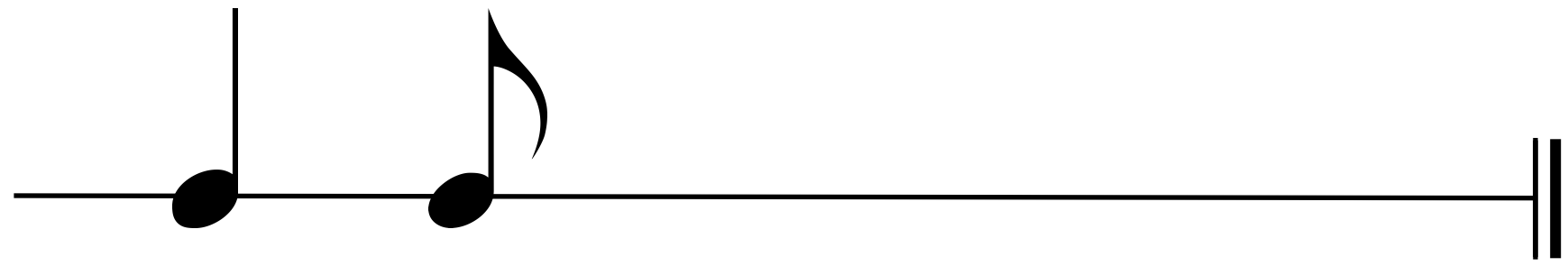
Complete
the
measure

Can you complete the measure?

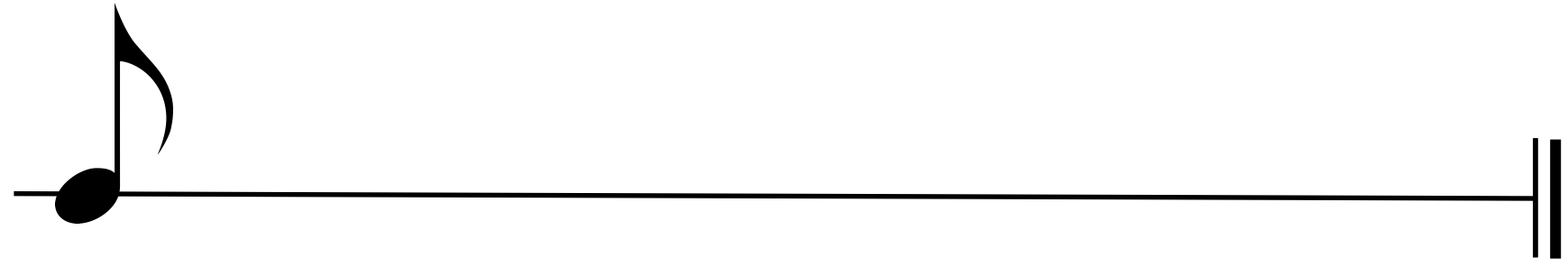
4
4

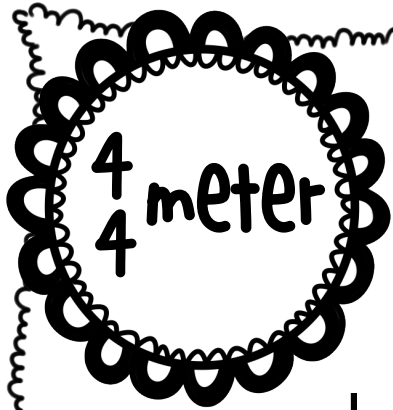


4
4



4
4





Complete
the
measure

Can you complete the measure?

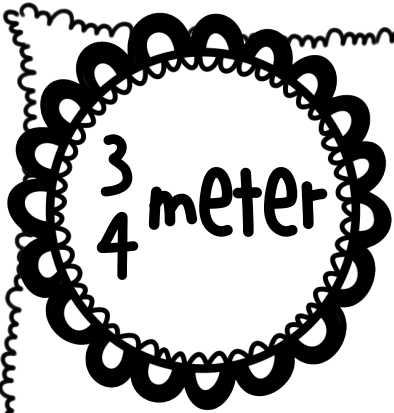
Three musical staves are shown, each with a 4/4 time signature. The first staff has a quarter note on the second line. The second staff has a quarter note on the second line followed by an eighth note on the second line. The third staff has an eighth note on the second line. Each staff ends with a double bar line, indicating the end of the measure.

$\frac{3}{4}$ meter

Complete the measure

Can you complete the measure?

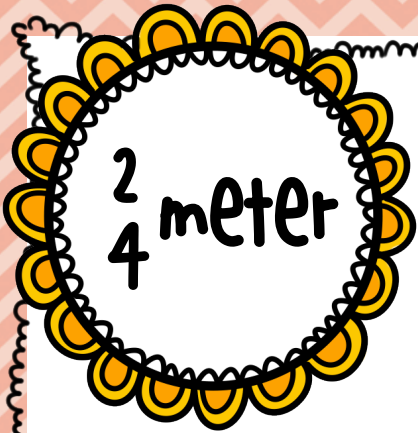
The image shows three musical staves, each labeled with a $\frac{3}{4}$ time signature. Each staff ends with a double bar line. The first staff contains a single quarter note on the second line. The second staff contains a quarter note on the second line followed by an eighth note on the second space. The third staff contains a single quarter note on the second space.



Complete
the
measure

Can you complete the measure?

Three musical staves are shown, each with a 3/4 time signature. The first staff contains a single quarter note on the second line. The second staff contains a quarter note on the second line followed by an eighth note on the second line with a beamed eighth rest. The third staff contains a quarter note on the second space. Each staff ends with a double bar line.



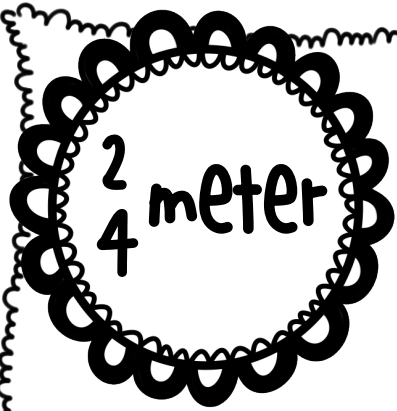
Complete
the
measure

Can you complete the measure?

2
4

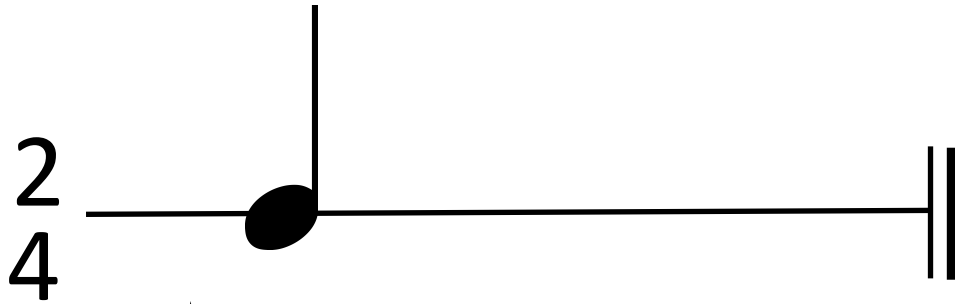
2
4

2
4



Complete
the
measure

Can you complete the measure?



mixed meters

Complete the measure

Can you complete the measure?

4/4

A musical staff with a 4/4 time signature. The first measure contains a quarter note on the second line. The second measure contains a quarter note on the second line. The rest of the staff is blank.

3/4

A musical staff with a 3/4 time signature. The first measure contains a quarter note on the second line. The rest of the staff is blank.

2/4

A musical staff with a 2/4 time signature. The first measure contains a quarter note on the second line. The rest of the staff is blank.

mixed meters

Complete the measure

Can you complete the measure?

4/4

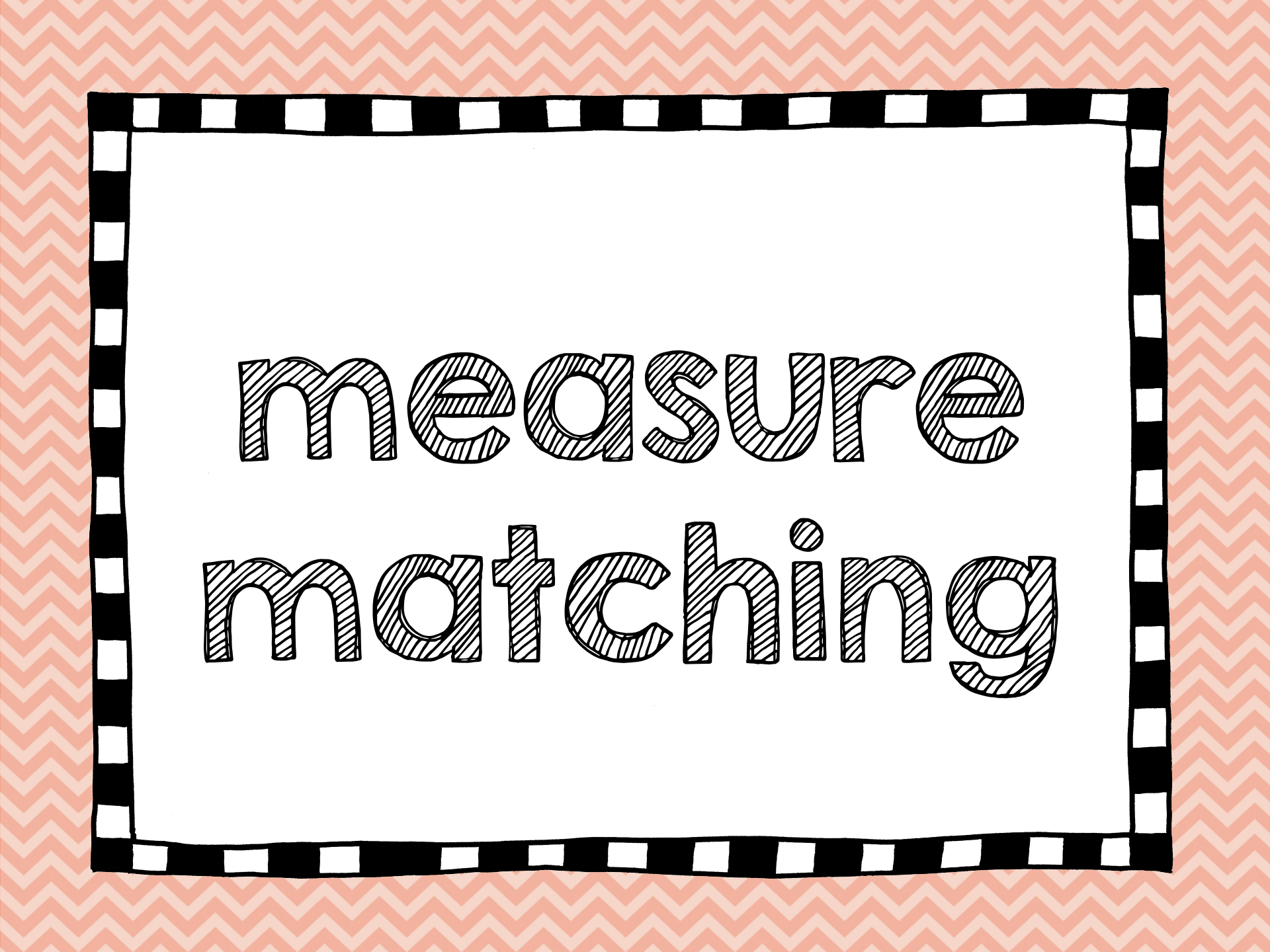
4/4

3/4

3/4

2/4

2/4



measure
matching

4 meter

Listen to the four

rhythms on recording # 1. Match the numbers with the correct measures.

measure
matching

1

A musical staff with a 4/4 time signature. The rhythm consists of four quarter notes: the first is on the first line, the second on the second line, the third on the second space, and the fourth on the third line.

2

A musical staff with a 4/4 time signature. The rhythm consists of four quarter notes: the first is on the first line, the second on the second line, the third on the second space, and the fourth on the third line.

3

A musical staff with a 4/4 time signature. The rhythm consists of four quarter notes: the first is on the first line, the second on the second line, the third on the second space, and the fourth on the third line.

4

A musical staff with a 4/4 time signature. The rhythm consists of four quarter notes: the first is on the first line, the second on the second line, the third on the second space, and the fourth on the third line.

4 meter

Listen to the four

rhythms on recording # 1. Match the numbers with the correct measures.

measure
matching

1

A musical staff with a 4/4 time signature. The rhythm consists of four quarter notes: one on the first beat, one on the second beat, one on the third beat, and one on the fourth beat.

2

A musical staff with a 4/4 time signature. The rhythm consists of a half note on the first beat, followed by two quarter notes on the second and third beats, and a quarter rest on the fourth beat.

3

A musical staff with a 4/4 time signature. The rhythm consists of a quarter note on the first beat, followed by three eighth notes on the second and third beats, and a quarter rest on the fourth beat.

4

A musical staff with a 4/4 time signature. The rhythm consists of a quarter note on the first beat, a quarter rest on the second beat, and quarter rests on the third and fourth beats.

3 4 meter

Listen to the four rhythms on recording #2. Match the numbers with the correct measures.

measure
matching

1

3
4

2

3
4

3

3
4

4

3
4

3 4 meter

Listen to the four

rhythms on recording #2. Match the numbers with the correct measures.

measure
matching

1

3
4

2

3
4

3

3
4

4

3
4

2 meter 4

Listen to the four rhythms on recording #3. Match the numbers with the correct measures.

measure
matching

1

A musical staff with a 2/4 time signature. The first measure contains a dotted quarter note followed by a quarter note. The second measure is empty.

2

A musical staff with a 2/4 time signature. The first measure contains a quarter note followed by a quarter note. The second measure contains a quarter note followed by a quarter note.

3

A musical staff with a 2/4 time signature. The first measure contains a quarter note followed by a quarter note. The second measure is empty.

4

A musical staff with a 2/4 time signature. The first measure contains a quarter note followed by a quarter note. The second measure contains a quarter note followed by a quarter note.

2 meter 4

Listen to the four

rhythms on recording #3. Match the numbers with the correct measures.

measure
matching

1

A musical staff with a 2/4 time signature. The first measure contains a quarter note on the second line. The second measure contains a quarter note on the second line and a quarter rest. A double bar line is at the end of the staff.

2

A musical staff with a 2/4 time signature. The first measure contains a quarter note on the second line and a quarter rest. The second measure contains a quarter note on the second line. A double bar line is at the end of the staff.

3

A musical staff with a 2/4 time signature. The first measure contains a quarter note on the second line. The second measure contains a quarter note on the second line. A double bar line is at the end of the staff.

4

A musical staff with a 2/4 time signature. The first measure contains a quarter note on the second line and a quarter rest. The second measure contains a quarter note on the second line and a quarter rest. The third measure contains a quarter note on the second line and a quarter rest. The fourth measure contains a quarter note on the second line and a quarter rest. A double bar line is at the end of the staff.

mixed meters

Listen to the four rhythms on recording #4. Match the numbers with the correct measures.

measure matching

1

A musical staff with a 4/4 time signature. The rhythm consists of four quarter notes, each with a rectangular measure box above it. The notes are positioned on the first, second, third, and fourth lines of the staff.

2

A musical staff with a 4/4 time signature. The rhythm consists of four quarter notes, each with a rectangular measure box above it. The notes are positioned on the first, second, third, and fourth lines of the staff.

3

A musical staff with a 3/4 time signature. The rhythm consists of three quarter notes, each with a rectangular measure box above it. The notes are positioned on the first, second, and third lines of the staff.

4

A musical staff with a 3/4 time signature. The rhythm consists of two quarter notes followed by a half note. The first two notes have rectangular measure boxes above them, and the half note has a single measure box above it. The notes are positioned on the first, second, and third lines of the staff.

mixed meters

Listen to the four

rhythms on recording #4. Match the numbers with the correct measures.

measure
matching

1

A musical staff with a 4/4 time signature. The rhythm consists of four quarter notes, each with a rectangular block above it representing its duration. The notes are evenly spaced across the staff.

2

A musical staff with a 4/4 time signature. The rhythm consists of four eighth notes, each with a rectangular block above it representing its duration. The notes are evenly spaced across the staff.

3

A musical staff with a 3/4 time signature. The rhythm consists of three quarter notes, each with a rectangular block above it representing its duration. The notes are evenly spaced across the staff.

4

A musical staff with a 4/4 time signature. The rhythm consists of two quarter notes followed by a half note, each with a rectangular block above it representing its duration. The notes are evenly spaced across the staff.

get
moving!

get
moving!

Recording #5

You are listening to music in $\frac{3}{4}$ meter.

Count the beat 1 - 2 - 3.

Clap loudly on 1 and softly on 2 and 3.

Clap with a partner!



Recording #6

You are listening to music in $\frac{4}{4}$ meter.

Count the beat 1 - 2 - 3 - 4.

Stomp loudly on 1 and softly on 2, 3, and 4.

Stomp with a partner!



match

that song!

match
that song!

Listen to the five songs on recording #7-11.

Clap loudly on 1 and softly on the other beats.

Match the song titles with the correct time signature.

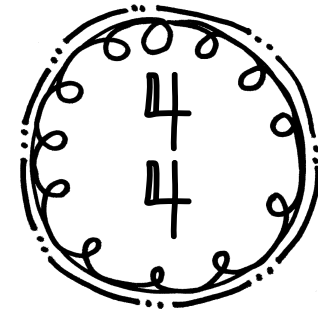
Are you sleeping

Tumbalalaika

Blue Bird

Que Sera, Sera

Had a Little Rooster



match
that song!

Listen to the five songs on recording #7-11.

Clap loudly on 1 and softly on the other beats.

Match the song titles with the correct time signature.

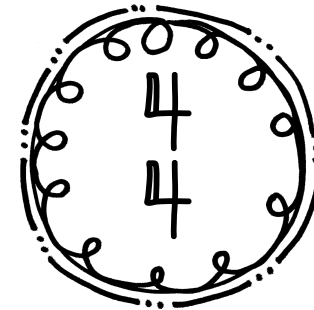
Are you sleeping

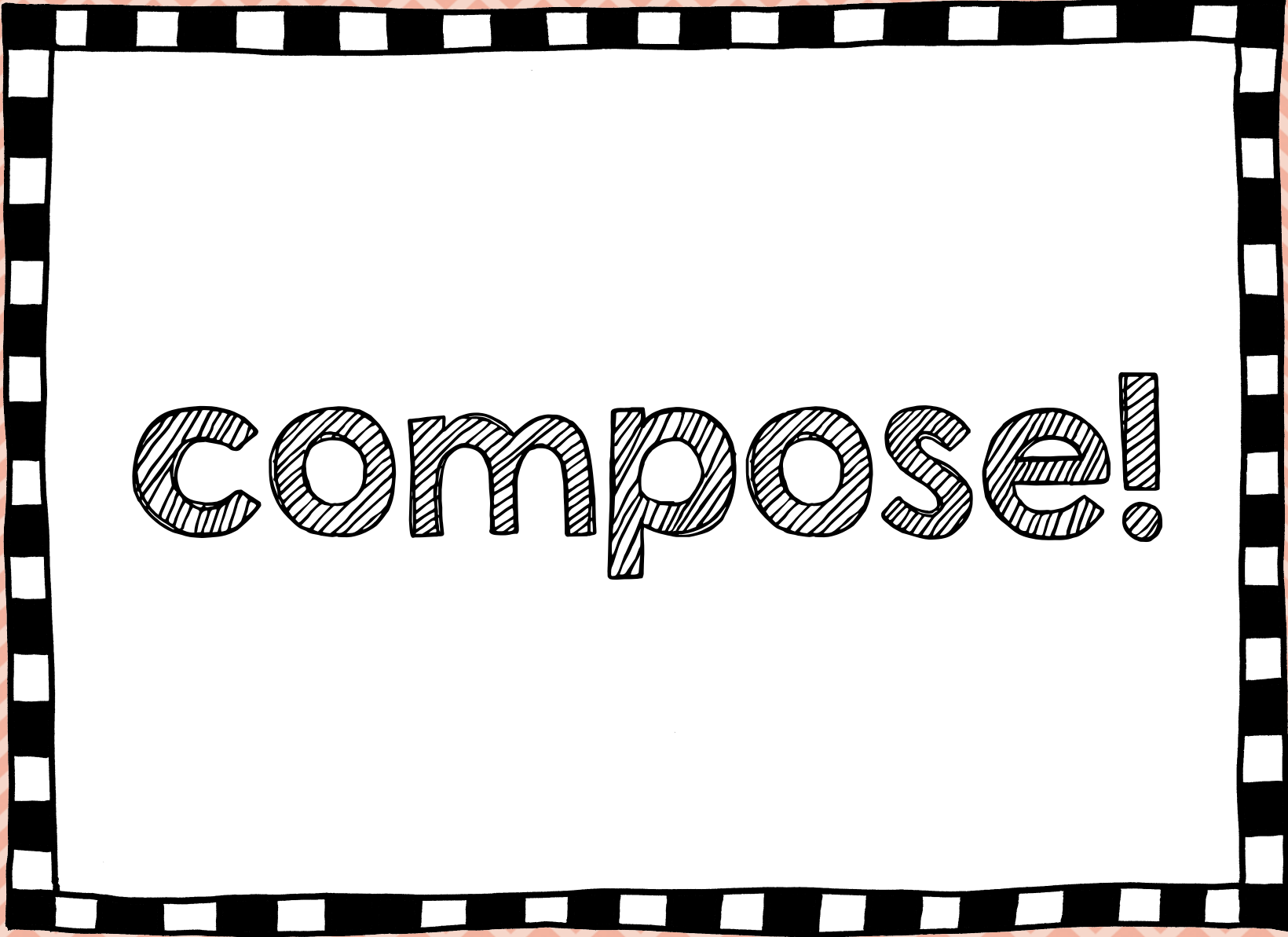
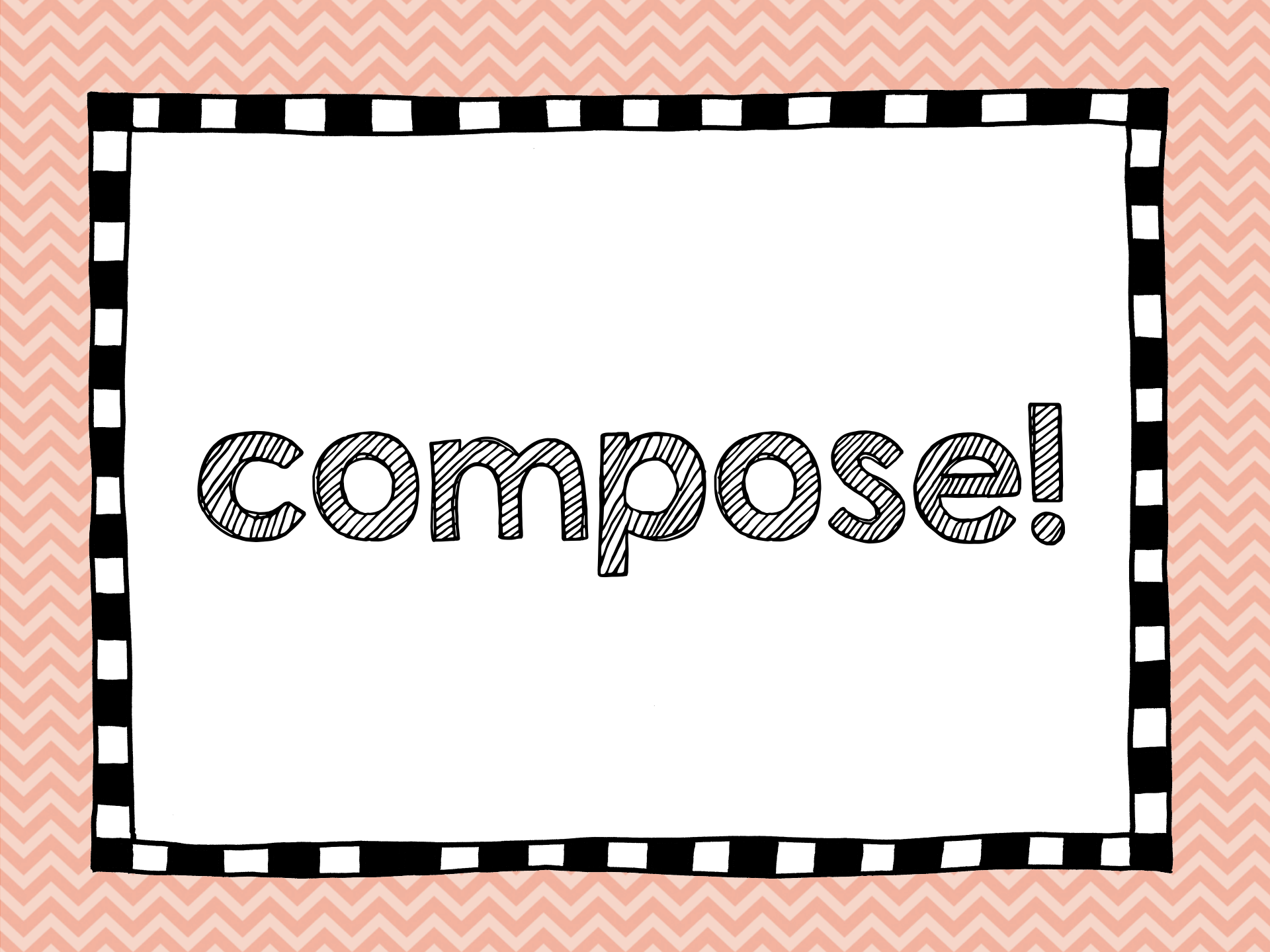
Tumbalalaika

Blue Bird

Que Sera, Sera

Had a Little Rooster





compose!

compose!

Compose your own measure.

Pick $\frac{4}{4}$ or $\frac{3}{4}$ meter. You can use the note cards.
Copy your composition onto your paper.

4
4

A horizontal line representing a musical staff. At the far right end, there is a double bar line consisting of two vertical lines of equal length.

3
4

A horizontal line representing a musical staff. At the far right end, there is a double bar line consisting of two vertical lines of equal length.

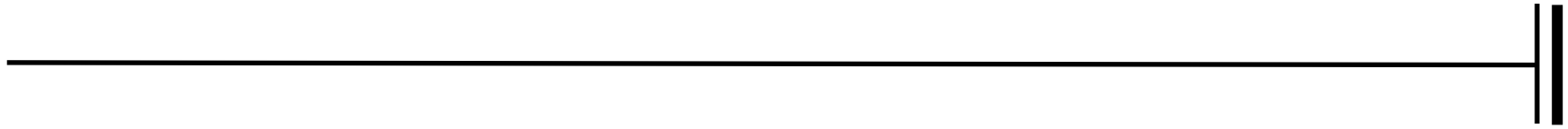
compose!

Compose your own measure.

Pick $\frac{4}{4}$ or $\frac{3}{4}$ meter. You can use the note cards.

Copy your composition onto your paper.

4
4



3
4



compose!

Play your measure with body instruments.

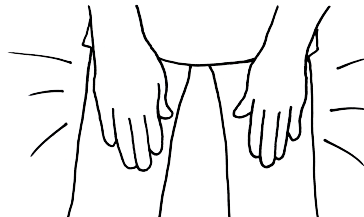
● = stomp



● = clap



♪ = pat



♪ = snap



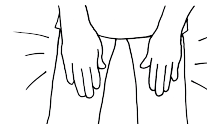
Switch your measure with your partner.

Play each other's measure with body instruments.

listen and

write

Listen to recordings #12-14.
Pat the rhythm on your thigh.
Now try to write down the rhythm.



listen and
write

4
4

1 2 3 4 1 2 3 4 1 2 3 4

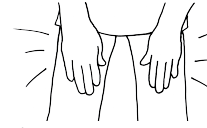
4
4

1 2 3 4 1 2 3 4 1 2 3 4

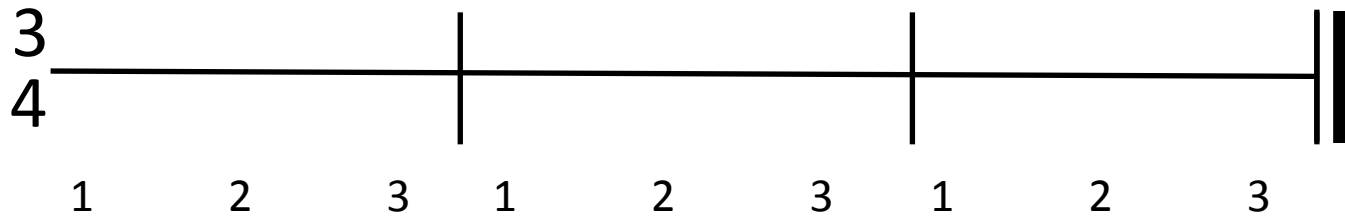
3
4

1 2 3 1 2 3 1 2 3

Listen to recordings #12-14.
Pat the rhythm on your thigh.
Now try to write down the rhythm.



listen and
write



Thank you!



Thanks for your
download!

Please leave me a quick comment at
[Learning to Teach Music.](#)

Fonts and graphics came from these lovely stores:



<https://www.teacherspayteachers.com/Store/Khdigi>

<https://www.teacherspayteachers.com/Store/Botanical-Amy>

